

YEAR 2015-2016

This year, the previous year tooling was used and students are needed to identify the problem from the manufactured sheet metal part and modify the tooling.

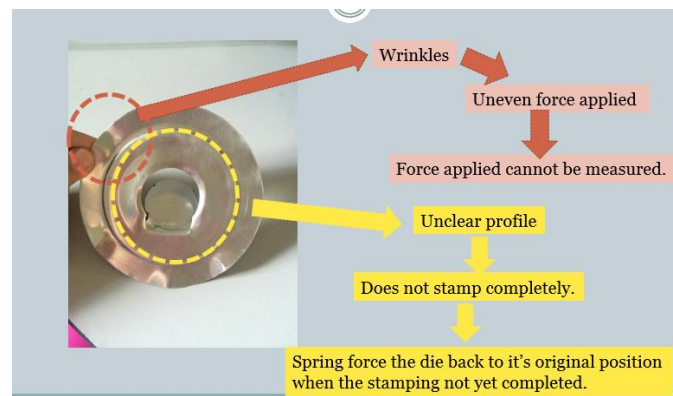
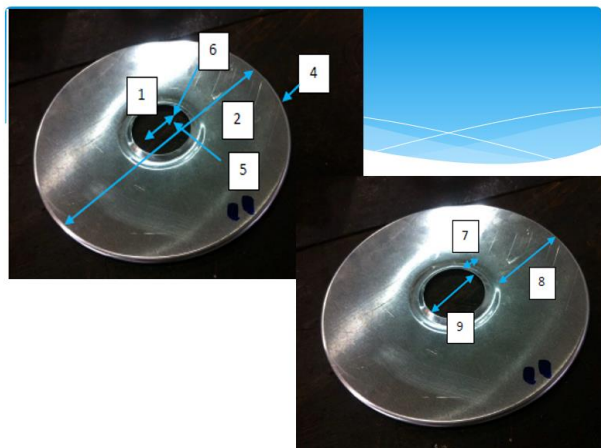

1ST ATTEMPT: PROBLEM 3

Problem?

- Cracks appeared before the metal starts forming

Why?

- Misalignment causes the clearance is not equal on every point of the edge.



Condition of Die after testing



Punch worn out

Identification of the tooling problems